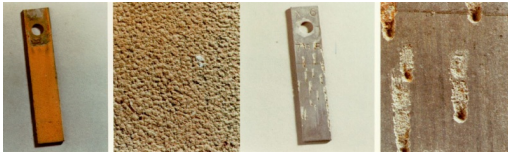




Why We Do What We Do

Your [ProAsys](#) water treatment program is designed to control corrosion, deposition and fouling in your heating, cooling &/or process systems. Achieving and maintaining proper chemical concentrations will save water and energy, extend equipment life and minimize downtime. Be sure to notify your ProAsys representative if there is any disruption/change in your water source.



[There are two types of corrosion - Uniform and Localized](#)

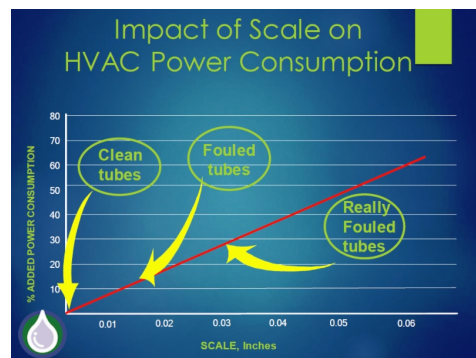
Corrosion

Factors that affect corrosion include pH, conductivity, temperature and oxygen. Corrosion coupons can be installed to monitor the effectiveness of your treatment program.

Deposition

Mineral scale is one form of deposition. Common scale types include calcium carbonate, magnesium silicate and calcium phosphate.

Fouling caused by suspended matter and transient corrosion can also lead to deposition.



[Click to Enlarge Photo](#)



[Biofouling \(Slime\)](#)

Microbiological Fouling

Biofouling blocks corrosion inhibitors, creates concentration cells, produces corrosion by-products and traps non-biological foulants.

If you have any questions or concerns, please contact your ProAsys representative or call 610-775-1505.

ProAsys | 610-775-1505 | www.proasysinc.com